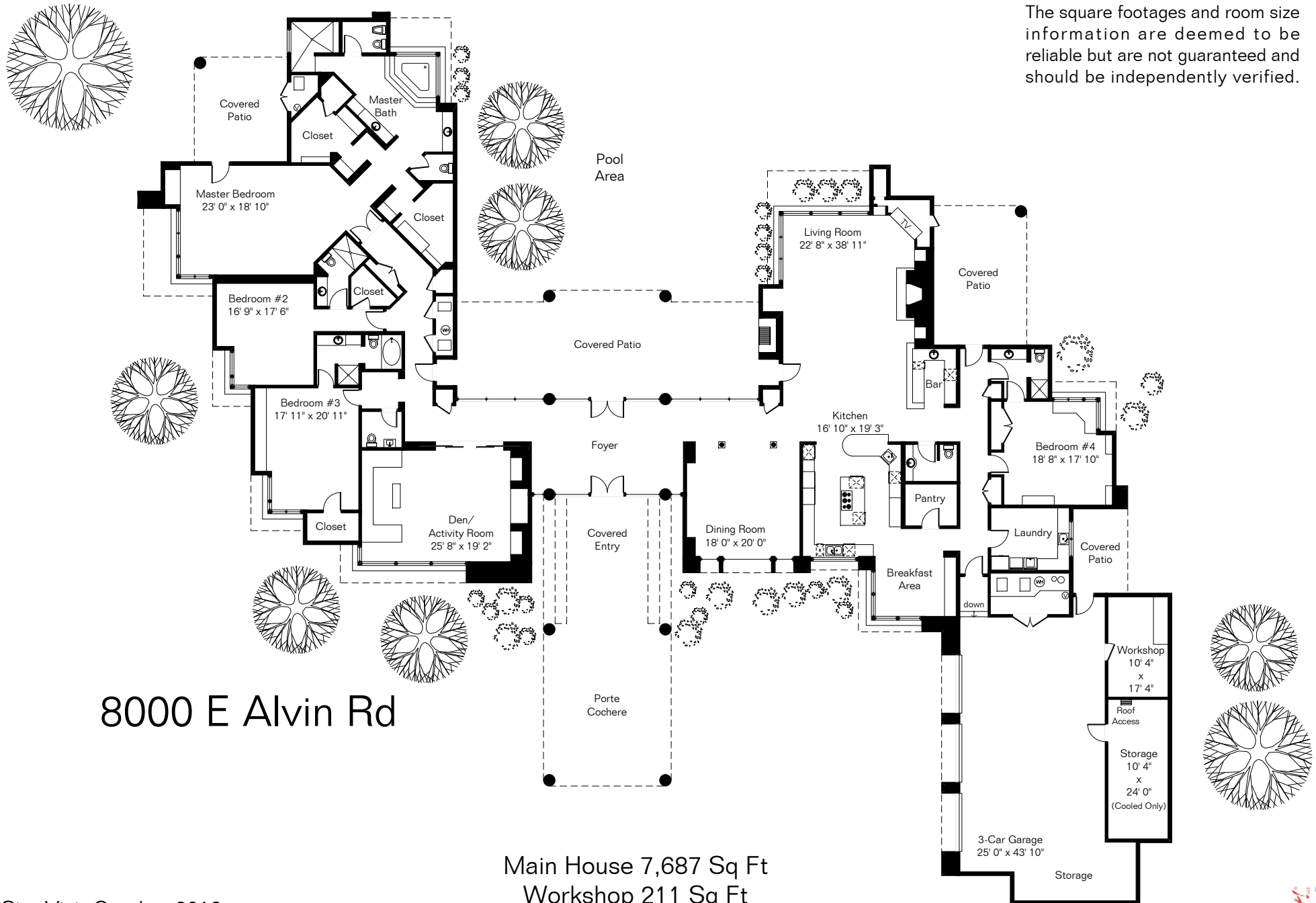


The square footages and room size information are deemed to be reliable but are not guaranteed and should be independently verified.



8000 E Alvin Rd

Main House 7,687 Sq Ft

Workshop 211 Sq Ft

Total Living Area 7,898 Sq Ft

Storage 283 Sq Ft

Garage 1,559 Sq Ft

Site Visit October 2019

0 ft. 9 ft. 15 ft. 30 ft.



Copyright 2019 Floor Plans First! LLC
All Rights Reserved.

www.FloorPlansFirst.com

Toll Free (877) 887-1500
Voice (520) 881-1500

Floor Plans First!
See the Floor Plan First!